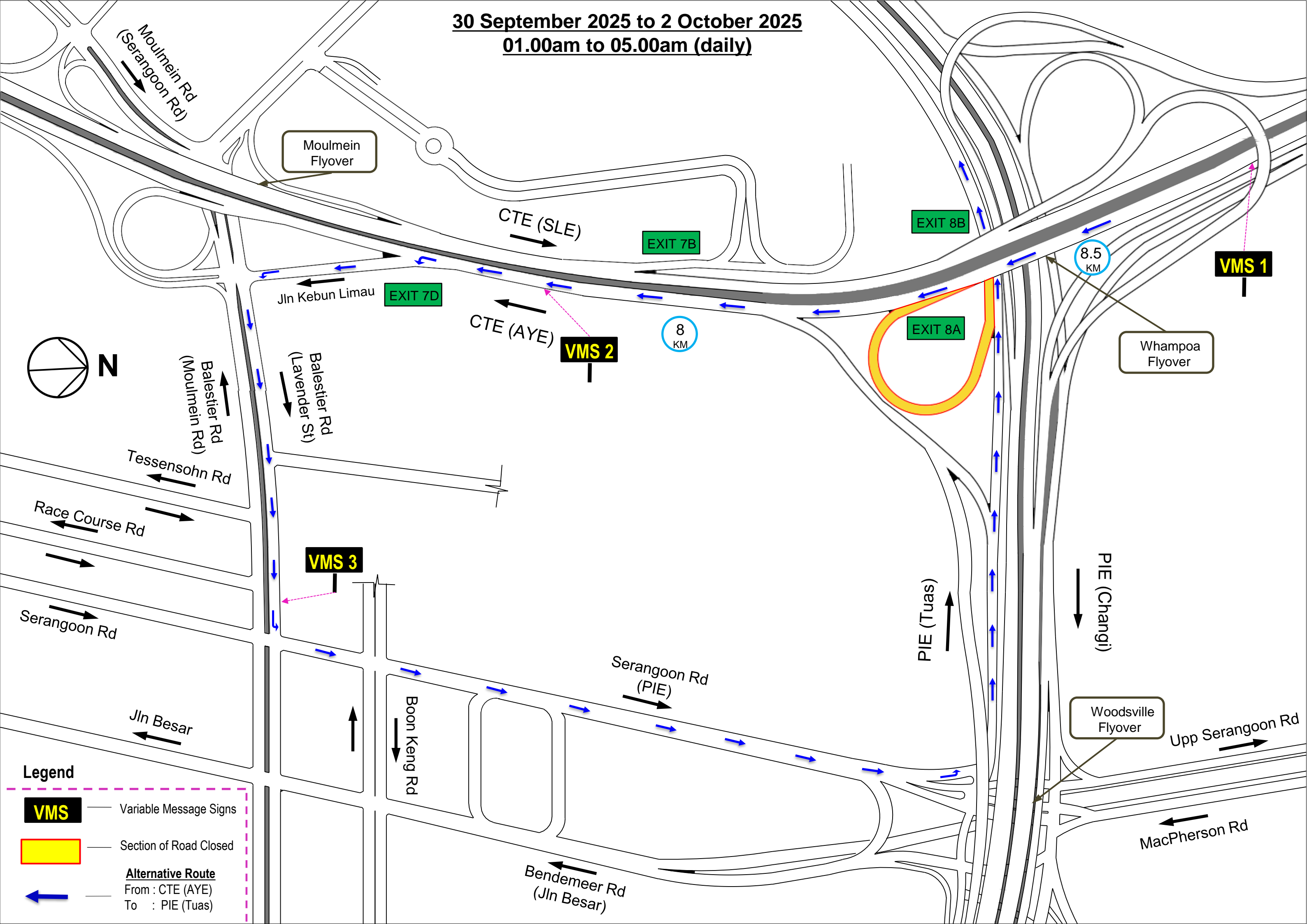


**30 September 2025 to 2 October 2025**  
**01.00am to 05.00am (daily)**



**Legend**

- VMS** — Variable Message Signs
- Section of Road Closed**
- Alternative Route**  
From : CTE (AYE)  
To : PIE (Tuas)



## Alternative Route

CTE (AYE ) Slip Rd To PIE (Tuas)

### Advanced Sign (3 days prior to commencement of work)

VMS 1 1<sup>ST</sup> DISPLAY

**SLIP RD TO PIE (TUAS)  
WILL BE CLOSED ON**

VMS 1 2<sup>ND</sup> DISPLAY

**30 SEP TO 2 OCT 2025  
FROM  
1.00 A.M TO 5.00 A.M**

Site Photograph





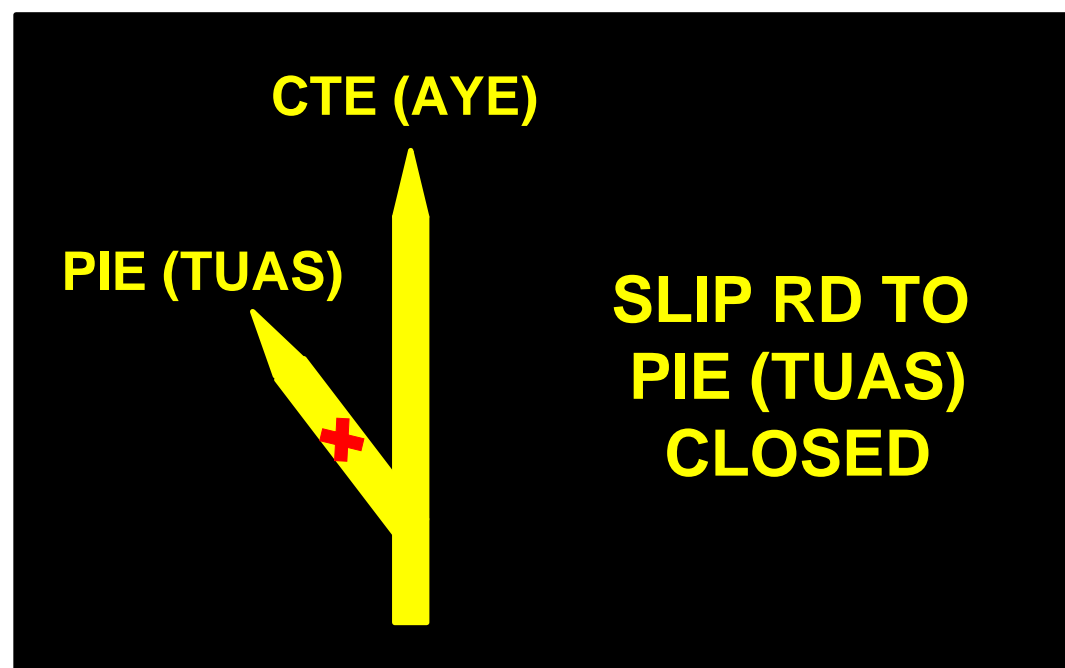


## Alternative Route

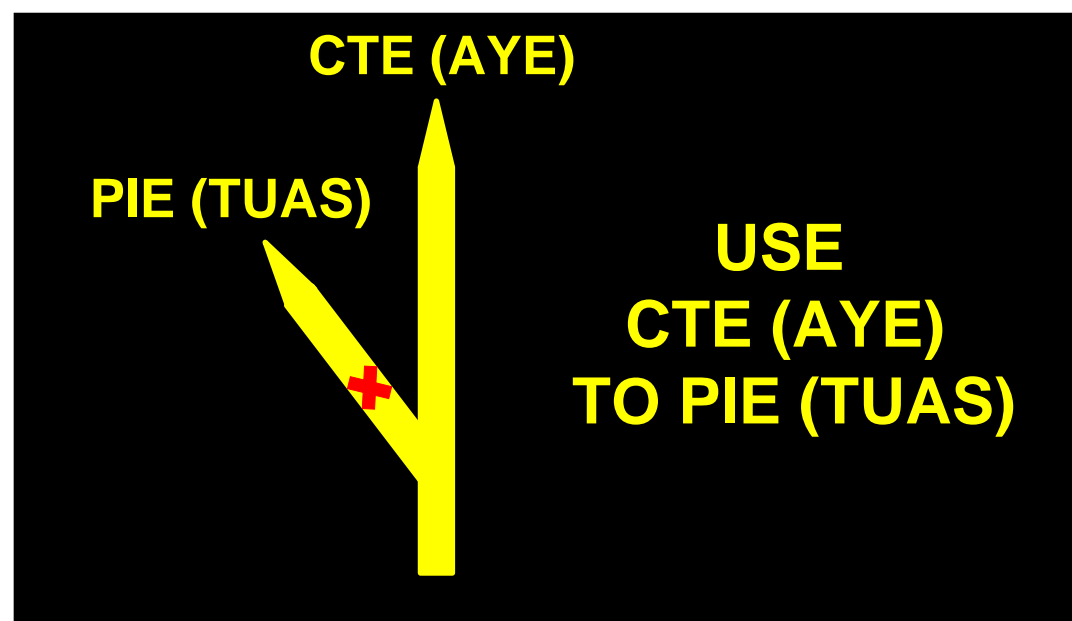
CTE (AYE ) Slip Rd To PIE (Tuas)

## On Closure Day

VMS 1 1<sup>ST</sup> DISPLAY



VMS 1 2<sup>ND</sup> DISPLAY



Site Photograph





# On Closure Day

VMS 2 1<sup>ST</sup> DISPLAY



Site Photograph



VMS 3 1<sup>ST</sup> DISPLAY

